

These are the notes referred to on the following official copy

The electronic official copy of the title plan follows this message.

Please note that this is the only official copy we will issue. We will not issue a paper official copy.

This official copy was delivered electronically and when printed will not be to scale. You can obtain a paper official copy by ordering one from HM Land Registry.

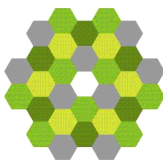
This official copy is issued on 11 December 2023 shows the state of this title plan on 11 December 2023 at 22:01:58. It is admissible in evidence to the same extent as the original (s.67 Land Registration Act 2002).

This title plan shows the general position, not the exact line, of the boundaries. It may be subject to distortions in scale. Measurements scaled from this plan may not match measurements between the same points on the ground.

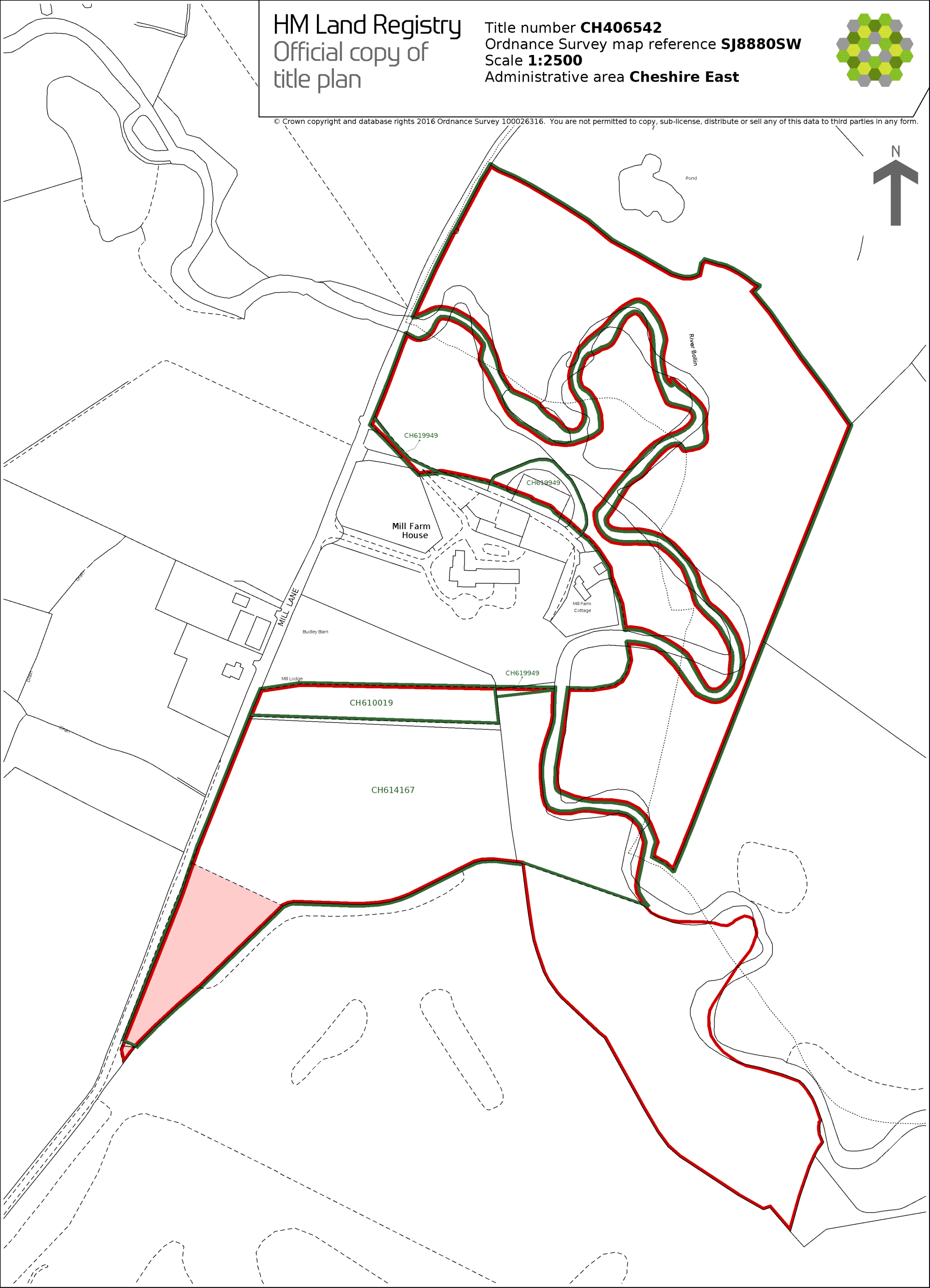
This title is dealt with by the HM Land Registry, Birkenhead Office .

HM Land Registry
Official copy of
title plan

Title number **CH406542**
Ordnance Survey map reference **SJ8880SW**
Scale **1:2500**
Administrative area **Cheshire East**



© Crown copyright and database rights 2016 Ordnance Survey 100026316. You are not permitted to copy, sub-license, distribute or sell any of this data to third parties in any form.



MB 25

H.M. LAND REGISTRY

TITLE NUMBER

CH265424

ORDNANCE SURVEY
PLAN REFERENCE

SJ8778

SJ8779

SJ8878

SJ8879

SJ8978

SJ8979

Scale

1/2500

COUNTY

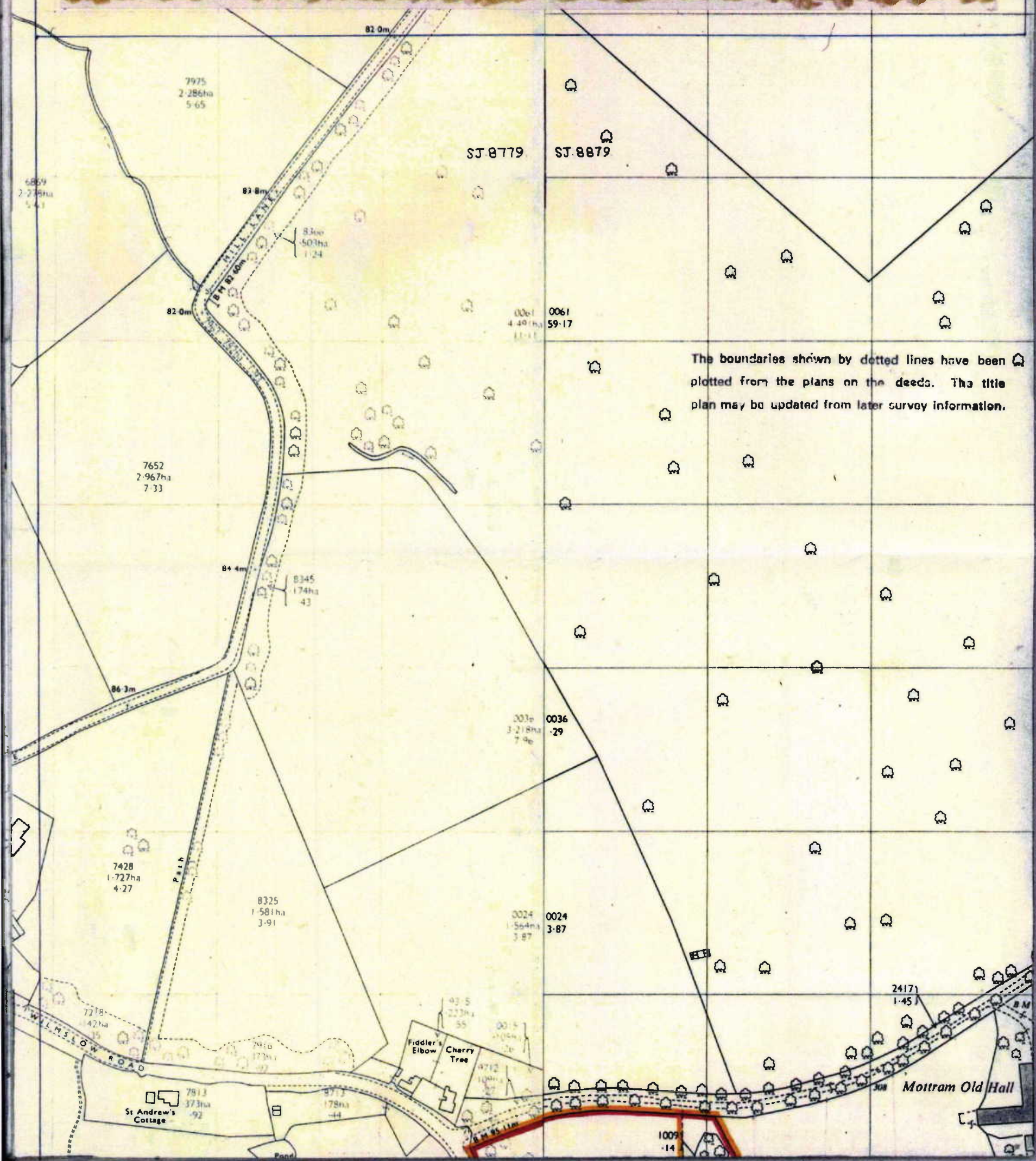
CHESHIRE

DISTRICT

MAGGLESFIELD

©

Crown copyright



This official copy is issued, and shows the state of this title plan, on 13 December 2023 at 08:50:28.

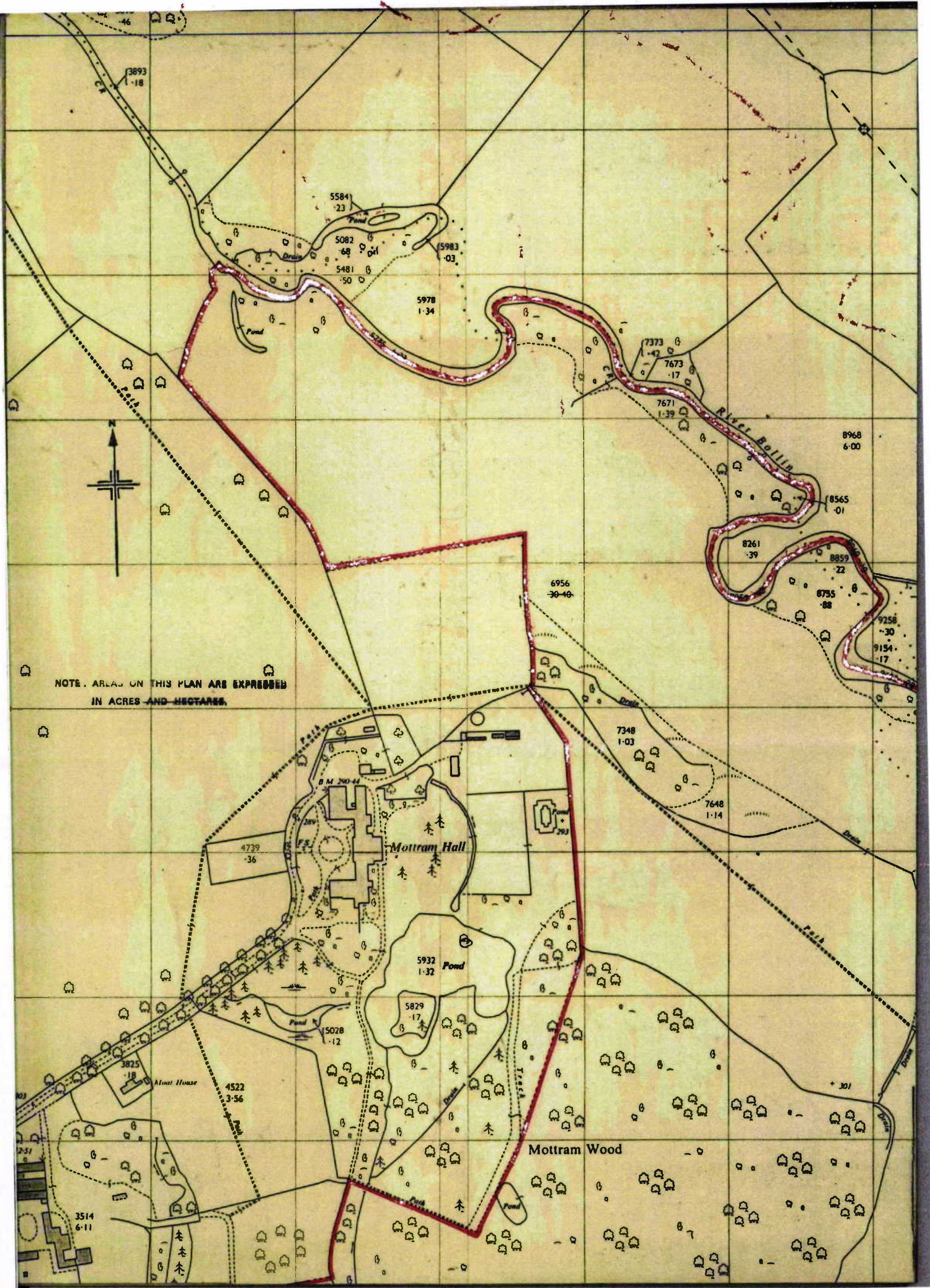
It is admissible in evidence to the same extent as the original (s.67 Land Registration Act 2002).

This title plan shows the general position, not the exact line, of the boundaries. It may be subject to distortions in scale. Measurements scaled from this plan may not match measurements between the same points on the ground.

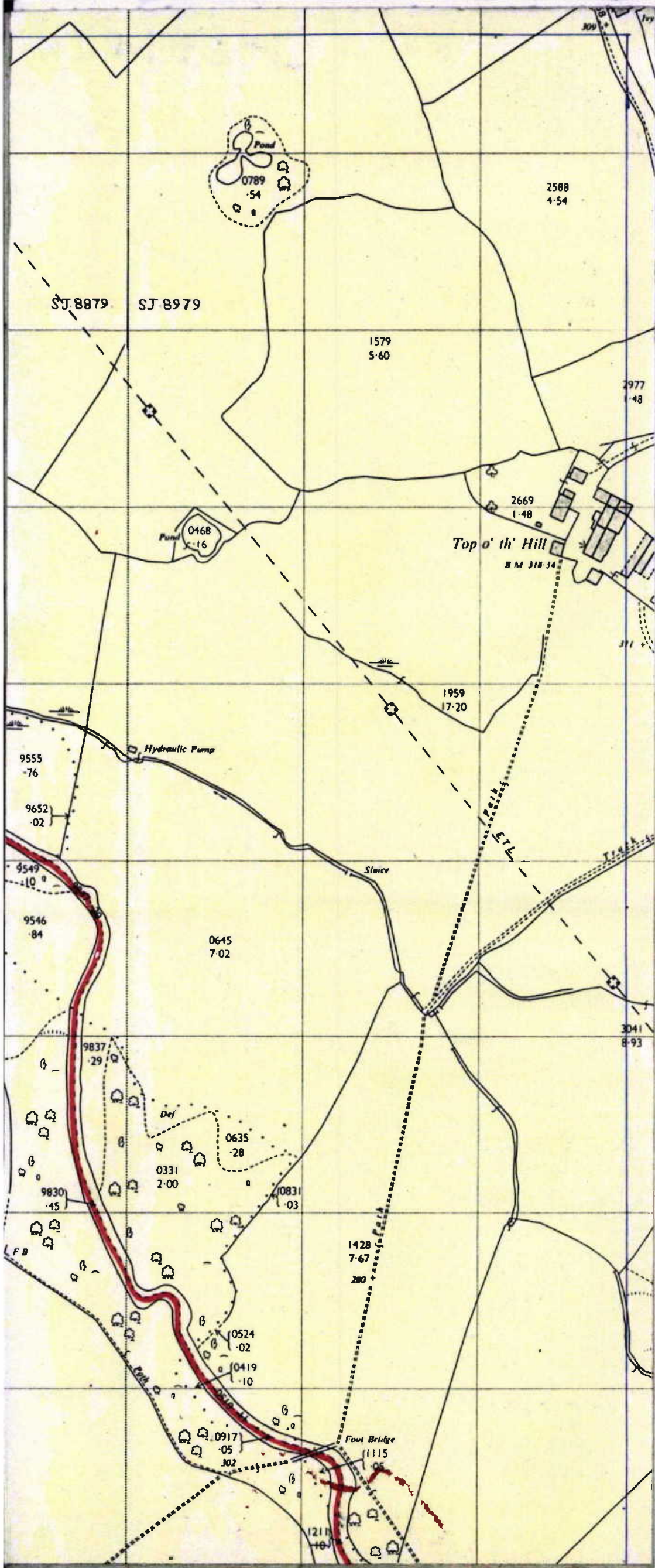
This title is dealt with by HM Land Registry, Birkenhead Office.

© Crown Copyright. Produced by HM Land Registry. Reproduction in whole or in part is prohibited without the prior written permission of Ordnance Survey.

Licence Number 100026316.



This official copy is issued, and shows the state of this title plan, on 13 December 2023 at 08:50:28.
It is admissible in evidence to the same extent as the original (s.67 Land Registration Act 2002).
This title plan shows the general position, not the exact line, of the boundaries. It may be subject to distortions in scale. Measurements scaled from this plan may not match measurements between the same points on the ground.
This title is dealt with by HM Land Registry, Birkenhead Office.
© Crown Copyright. Produced by HM Land Registry. Reproduction in whole or in part is prohibited without the prior written permission of Ordnance Survey.
Licence Number 100026316.



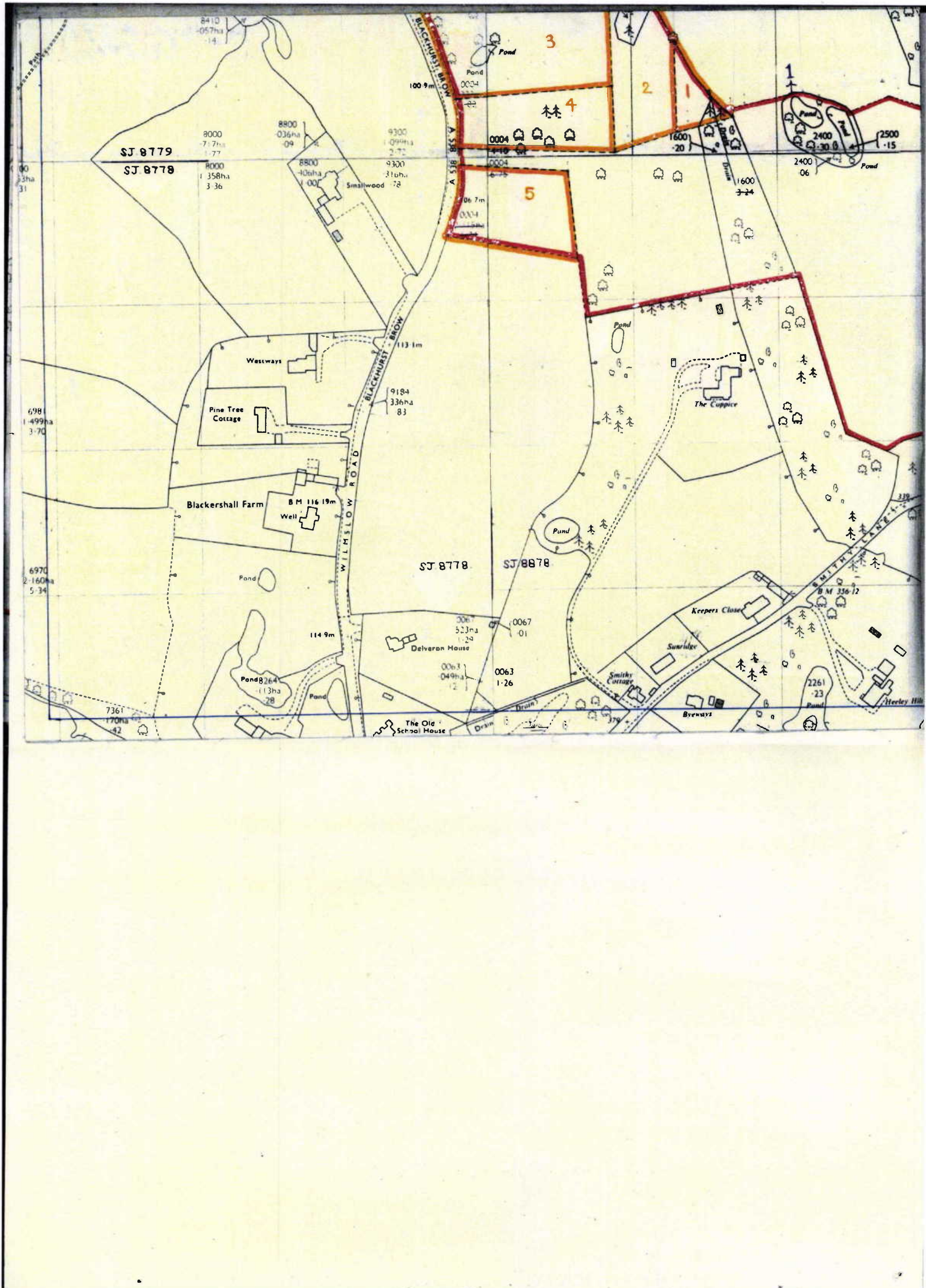
This official copy is issued, and shows the state of this title plan, on 13 December 2023 at 08:50:28.

It is admissible in evidence to the same extent as the original (s.67 Land Registration Act 2002).

This title plan shows the general position, not the exact line, of the boundaries. It may be subject to distortions in scale. Measurements scaled from this plan may not match measurements between the same points on the ground.

This title is dealt with by HM Land Registry, Birkenhead Office.

© Crown Copyright. Produced by HM Land Registry. Reproduction in whole or in part is prohibited without the prior written permission of Ordnance Survey. Licence Number 100026316.



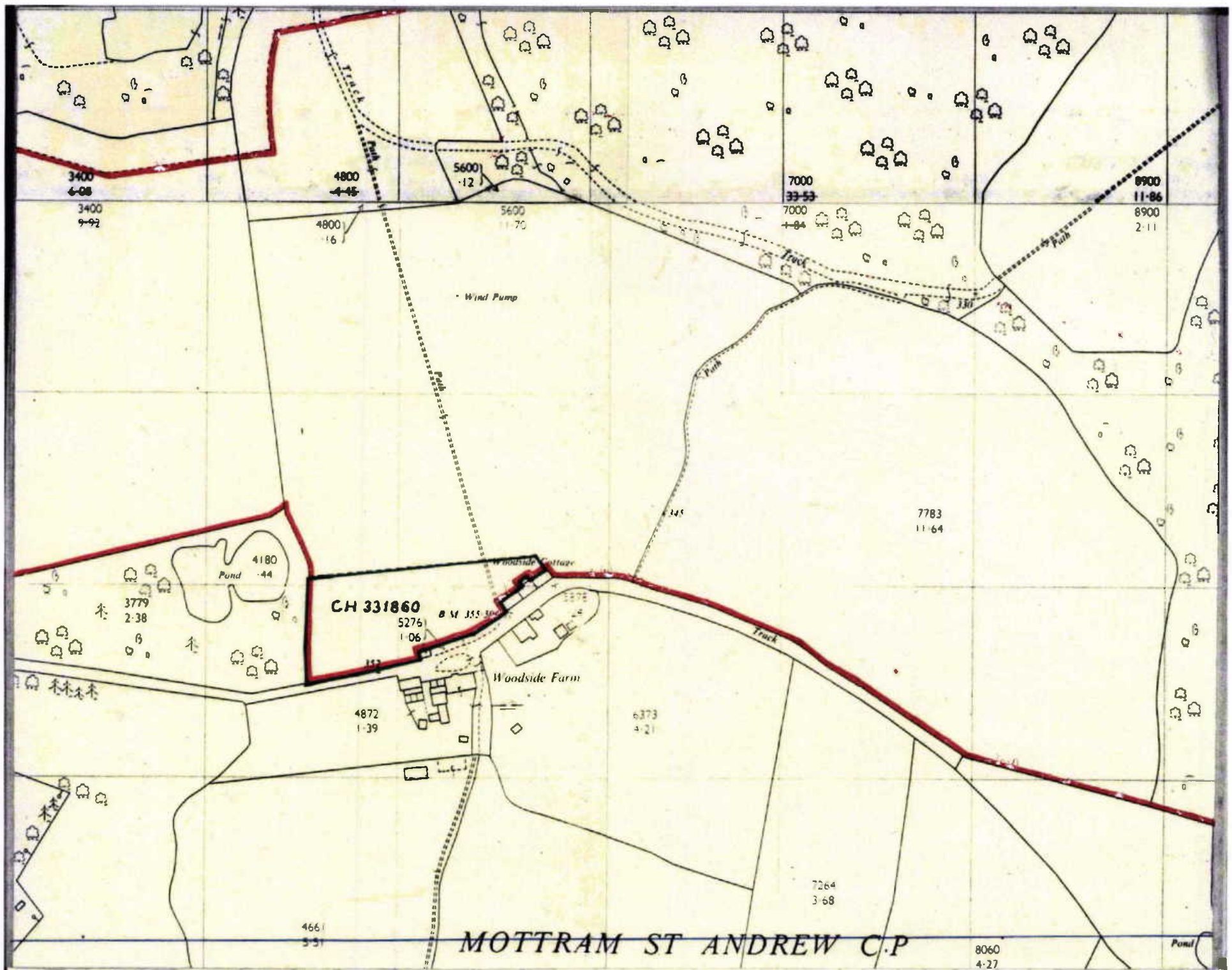
This official copy is issued, and shows the state of this title plan, on 13 December 2023 at 08:50:28.

It is admissible in evidence to the same extent as the original (s.67 Land Registration Act 2002).

This title plan shows the general position, not the exact line, of the boundaries. It may be subject to distortions in scale. Measurements scaled from this plan may not match measurements between the same points on the ground.

This title is dealt with by HM Land Registry, Birkenhead Office.

© Crown Copyright. Produced by HM Land Registry. Reproduction in whole or in part is prohibited without the prior written permission of Ordnance Survey. Licence Number 100026316.



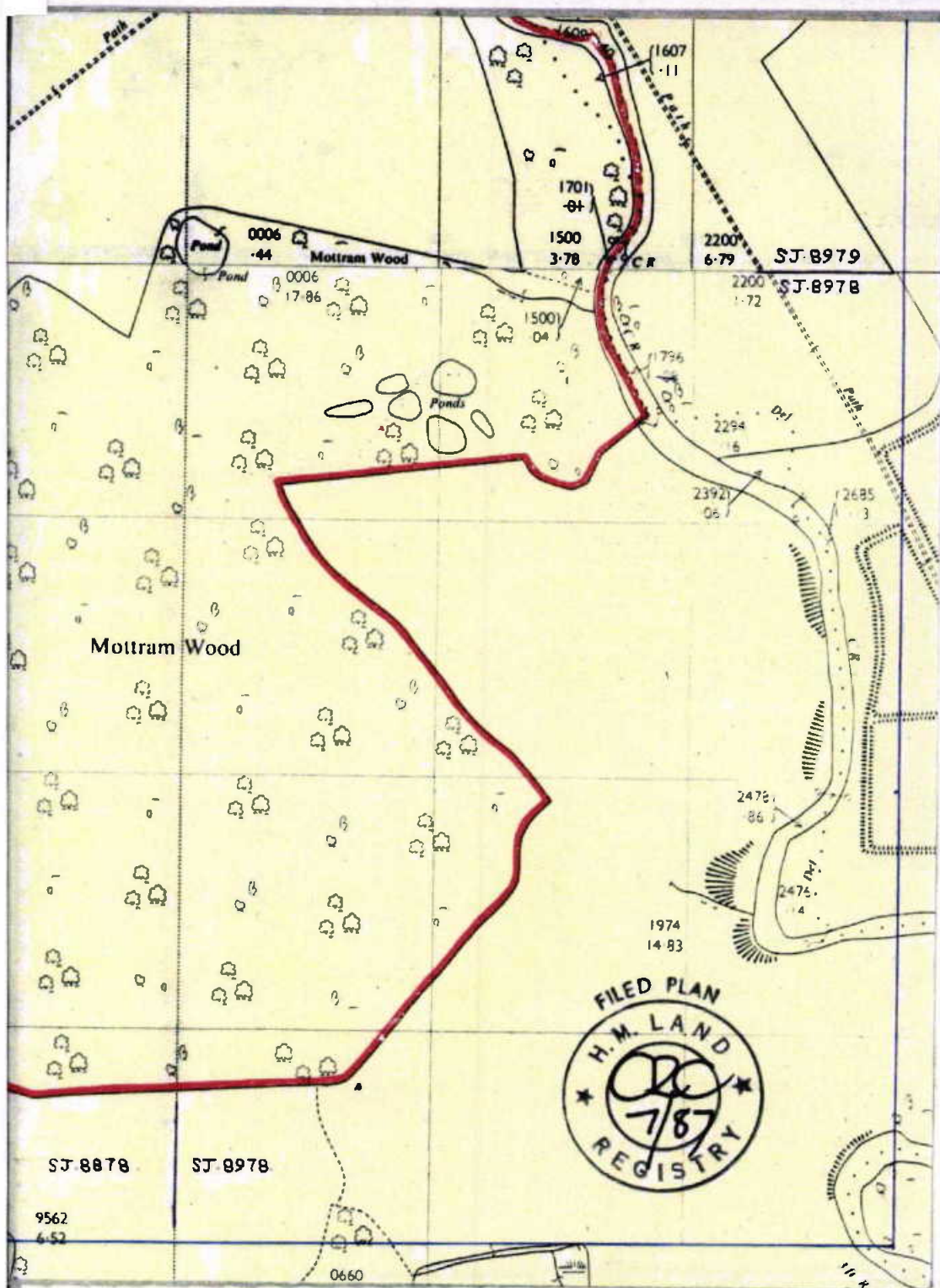
This official copy is issued, and shows the state of this title plan, on 13 December 2023 at 08:50:28.

It is admissible in evidence to the same extent as the original (s.67 Land Registration Act 2002).

This title plan shows the general position, not the exact line, of the boundaries. It may be subject to distortions in scale. Measurements scaled from this plan may not match measurements between the same points on the ground.

This title is dealt with by HM Land Registry, Birkenhead Office.

© Crown Copyright. Produced by HM Land Registry. Reproduction in whole or in part is prohibited without the prior written permission of Ordnance Survey. Licence Number 100026316.



This official copy is issued, and shows the state of this title plan, on 13 December 2023 at 08:50:28.

It is admissible in evidence to the same extent as the original (s.67 Land Registration Act 2002).

This title plan shows the general position, not the exact line, of the boundaries. It may be subject to distortions in scale. Measurements scaled from this plan may not match measurements between the same points on the ground.

This title is dealt with by HM Land Registry, Birkenhead Office.

© Crown Copyright. Produced by HM Land Registry. Reproduction in whole or in part is prohibited without the prior written permission of Ordnance Survey. Licence Number 100026316.